

MT Explorer 50

Interfaced with DS-APCI Ion Source for Small Molecule Applications

A compact tandem mass analyzer lets you bring laboratory capability with you wherever you want to go.

Features:

Semi- and low-volatile compound analysis

Fast Response

No sample preparation

MS and MS/MS capability

Mass accuracy: 0.3 Da

Weight: 75 lbs

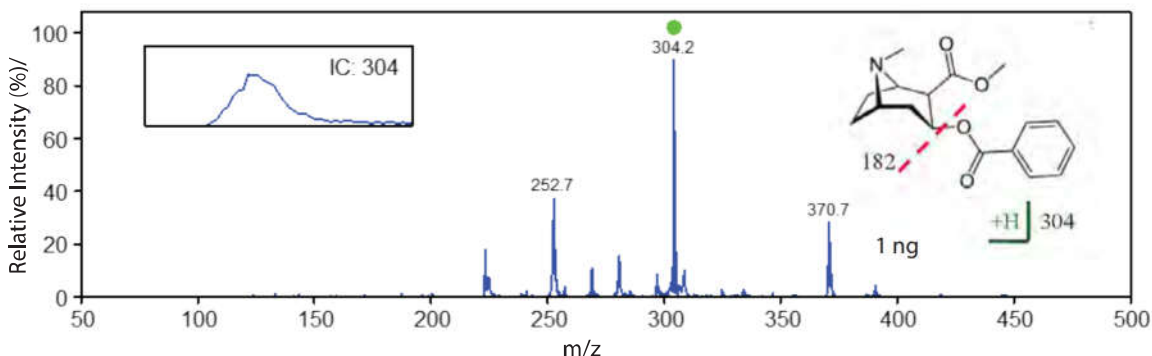
Dimension: 12" x 17" x 20"

Power: 100-300 W (AC or DC)

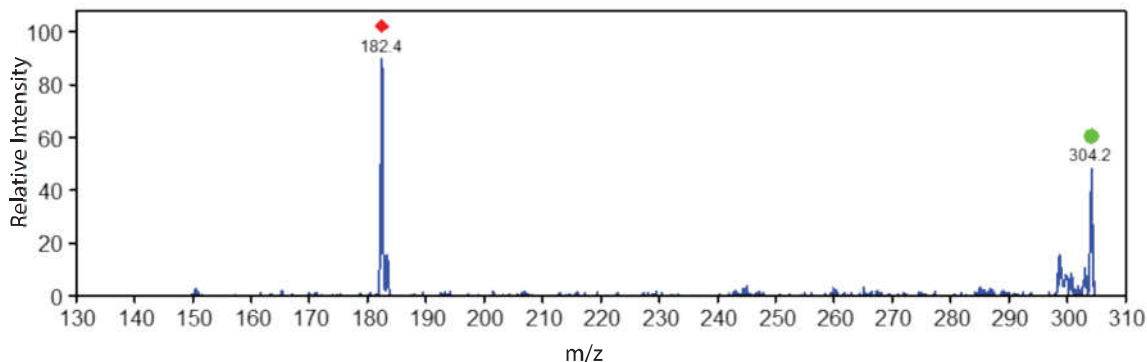


MT Explorer 50 in combination with MasTech Direct Sampling Atmospheric Pressure Chemical Ionization Source (DS-APCI)

Detection of Narcotics



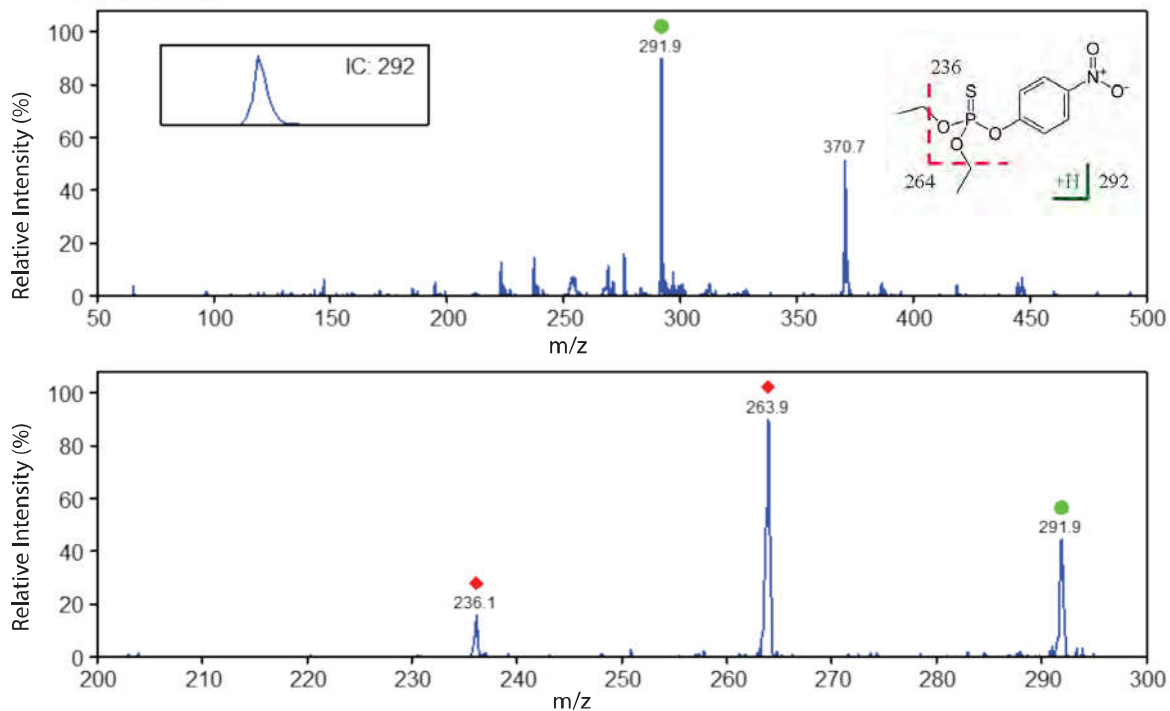
DS-APCI MS (above) and MS/MS (below) spectra of Cocaine. The molecular ion is indicated with green circle; fragment ions are indicated with red diamonds.



MT Explorer 50

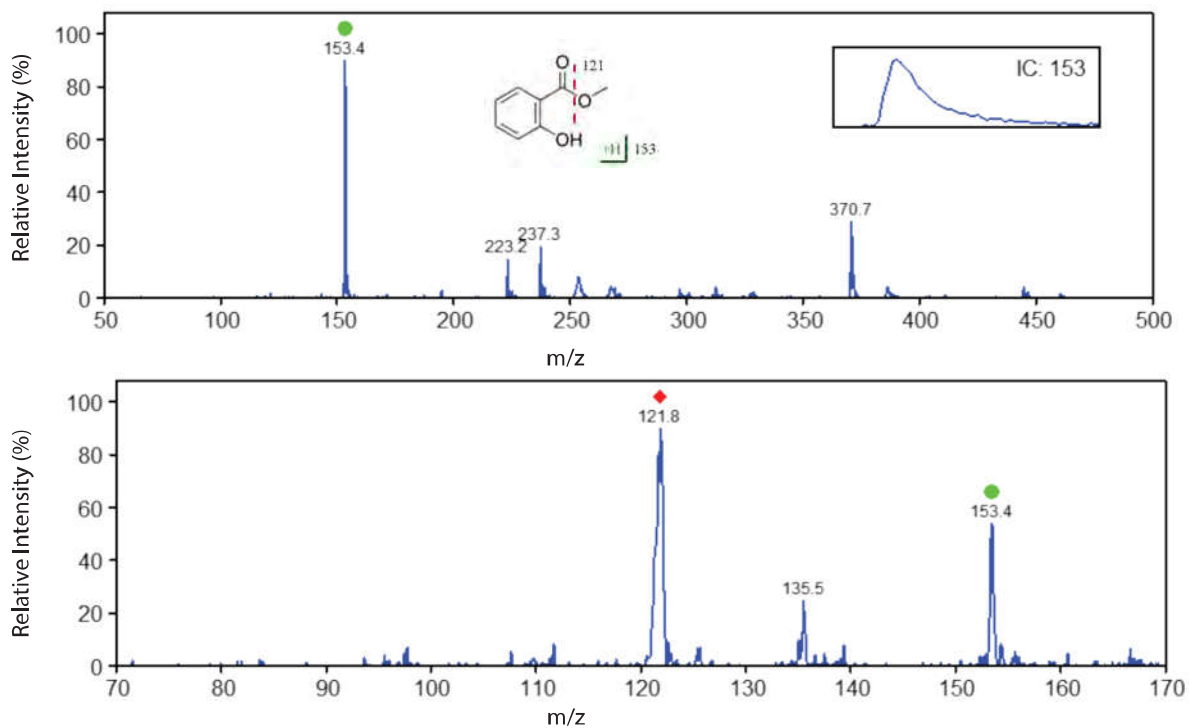
Detection of Pesticides

Parathion



DS-APCI MS and MS/MS spectra of Parathion. The molecular ion is indicated with green circle; fragment ions are indicated with red diamonds.

Methyl Salicylate



DS-APCI MS and MS/MS spectra of Methyl Salicylate. The molecular ion is indicated with green circle; fragment ions are indicated with red diamonds.