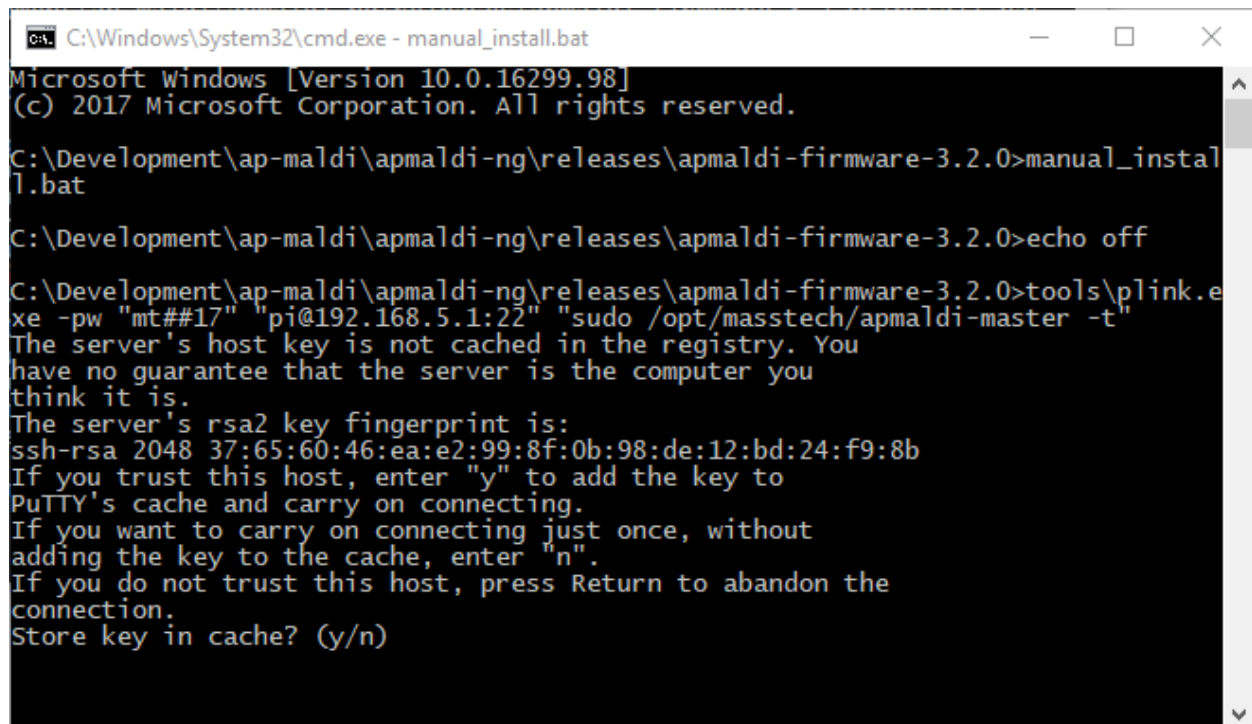


Installation instructions

1. Download APMALDI SD Card Update utility
2. Unzip.
3. Connect and turn on APMALDI ion source with **old** SD card installed
4. Run backup.bat from APMALDI SD Card Update folder
5. Accept server host key if needed (see Figure 1 bellow)
6. Turn off APMALDI ion source and replace SD card
7. Turn on APMALDI ion source and wait until power LED becomes bright (it may blink couple of times)
8. Run restore.bat from APMALDI Card Update folder
9. Run Target and validate licensing information in the Help->About dialog (See Figure 2 and Figure 3)
10. Contact MassTech Inc in case of license errors (See Figure 3)



```
C:\Windows\System32\cmd.exe - manual_install.bat
Microsoft Windows [Version 10.0.16299.98]
(c) 2017 Microsoft Corporation. All rights reserved.

C:\Development\ap-maldi\apmaldi-ng\releases\apmaldi-firmware-3.2.0>manual_install.bat

C:\Development\ap-maldi\apmaldi-ng\releases\apmaldi-firmware-3.2.0>echo off

C:\Development\ap-maldi\apmaldi-ng\releases\apmaldi-firmware-3.2.0>tools\plink.exe -pw "mt##17" "pi@192.168.5.1:22" "sudo /opt/masstech/apmaldi-master -t"
The server's host key is not cached in the registry. You have no guarantee that the server is the computer you think it is.
The server's rsa2 key fingerprint is:
ssh-rsa 2048 37:65:60:46:ea:e2:99:8f:0b:98:de:12:bd:24:f9:8b
If you trust this host, enter "y" to add the key to PuTTY's cache and carry on connecting.
If you want to carry on connecting just once, without adding the key to the cache, enter "n".
If you do not trust this host, press Return to abandon the connection.
Store key in cache? (y/n)
```

Figure 1. SSH Key Error

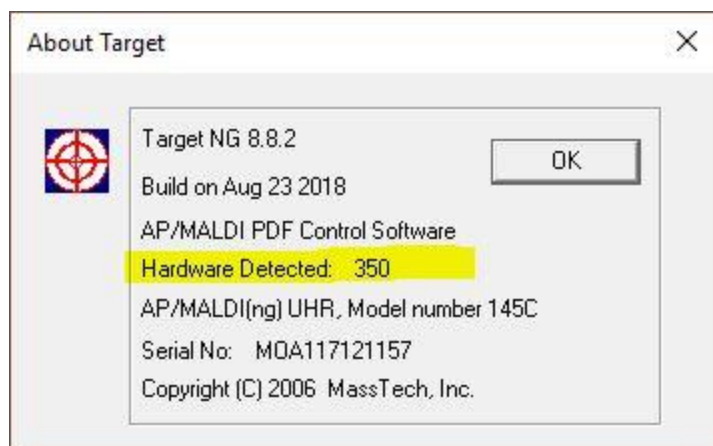


Figure 2. Licensed APMALDI ion source

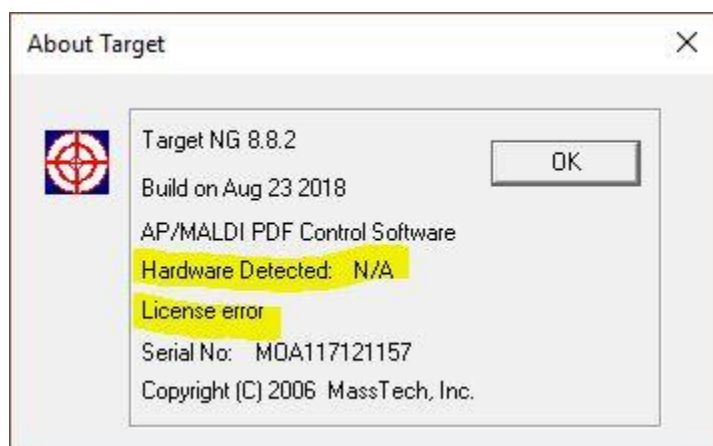


Figure 3. License Error